



MOTOCROSS GO! SD

OPERATION MANUAL

(The photograph above may be slightly different from the product.)



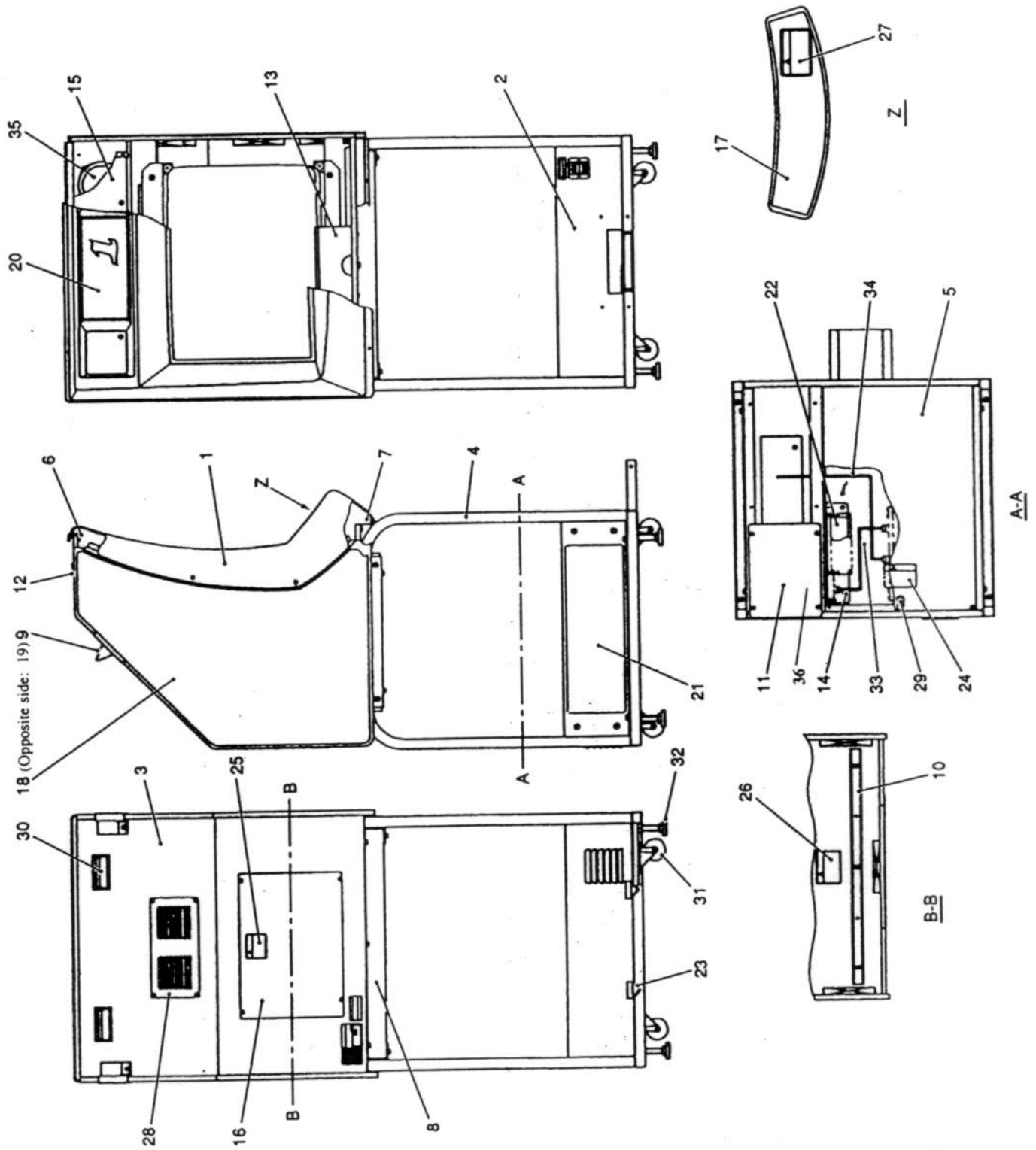
WARNING

- Be sure to read this manual thoroughly before using this product to operate it safely and correctly.
- Retain this manual in a safe place to read it any time as necessary.

Namco Ltd.

8. Parts List

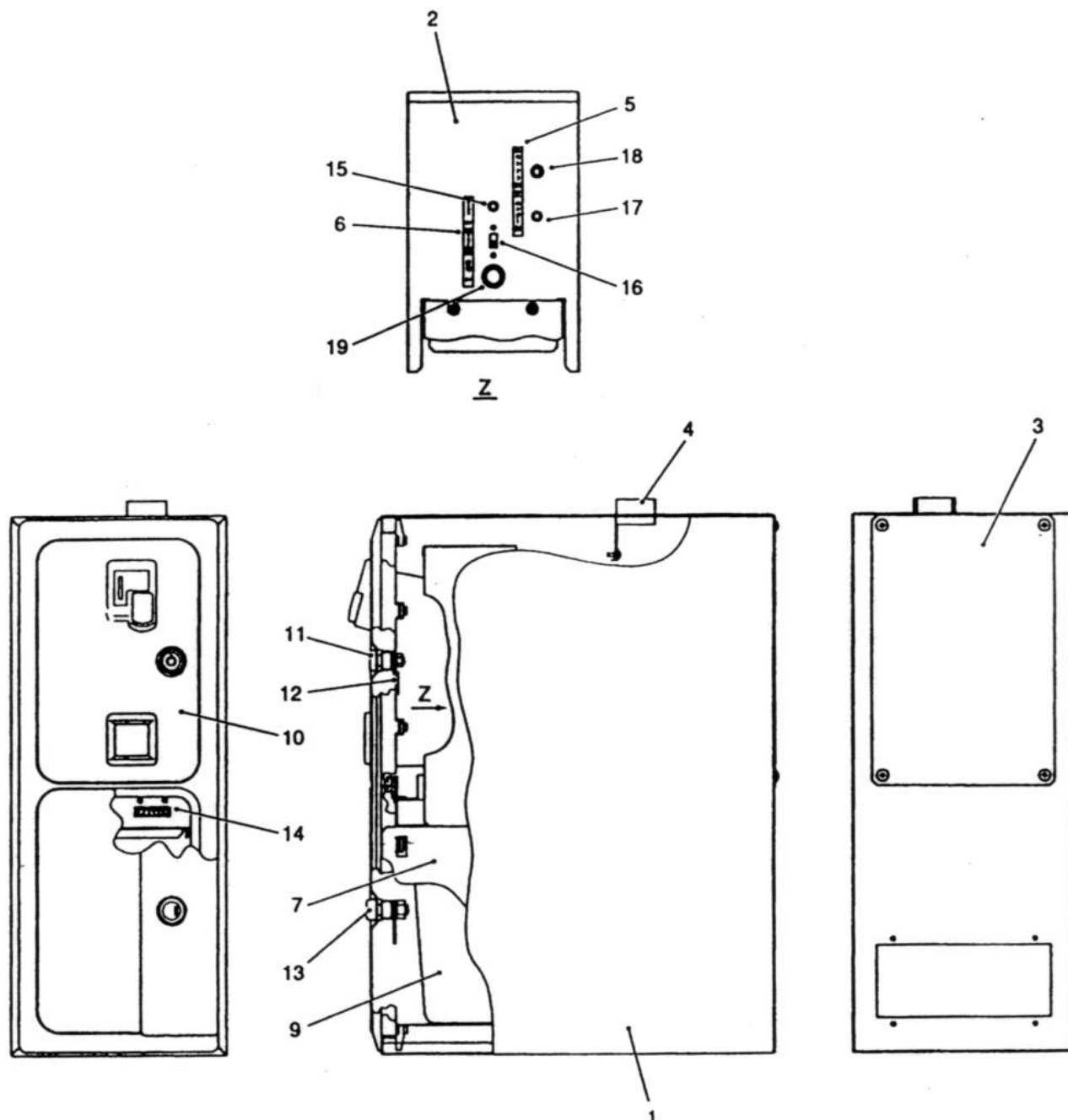
8-1 Monitor tower Assy



No.	Part name	Quantity	Part number
1	Monitor bezel	1	667-111
2	Front base	1	667-112
3	Monitor box	1	667-114
4	Stand pipe	2	667-115
5	Maintenance door	1	667-116
6	Monitor mask bracket A	1	667-117
7	Monitor mask bracket B	1	667-118
8	Box joint	1	667-119
9	Rope hook	2	667-120
10	Box joint bracket	2	667-121
11	Maintenance plate	1	667-122
12	Signboard bracket	2	667-123
13	Monitor bezel guard	1	667-124
14	I/O bracket	1	667-125
15	Speaker cover	2	667-126
16	Adjustment cover	1	667-127
17	Instruction sticker	1	667-130
18	Side sticker (L)	1	667-131
19	Side sticker (R)	1	667-161
20	Number sticker (1)	1 set	667-132
	Number sticker (2)		
	Number sticker (3)		
	Number sticker (4)		
21	Base sticker	2	667-133
22	I/O plate	1	666-412
23	Fork sticker	2	229-441
24	Caution sticker (Maintenance)	1	461-359
25	Warning sticker (High voltage)	1	461-373
26	Warning sticker (Internal parts) A	1	461-361
27	Caution sticker (Coin)	1	461-299
28	Ventilation panel	1	450-125
29	Coin lock (C-88-1) (random number) See Note 1.	1	101-011
30	Handle [#3814844]	2	624-150
31	Caster [440G-N65]	4	102-028
32	Adjuster [MKRL-50-16-78B6]	4	102-039
33	USB harness [81-571-0001-010]	2	667-141
34	17HE harness	1	667-142
35	Speaker [FW130G51-3]	2	006-112
36	Transformer	1	

Note 1: If you specify the part number (same number) or the part No. 29, contact your distributor.

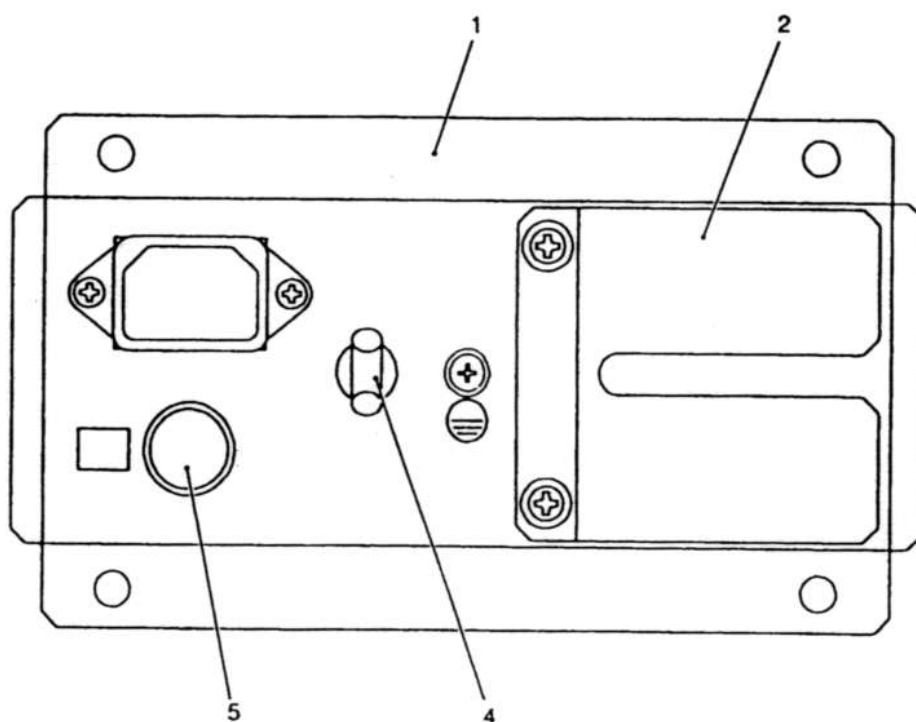
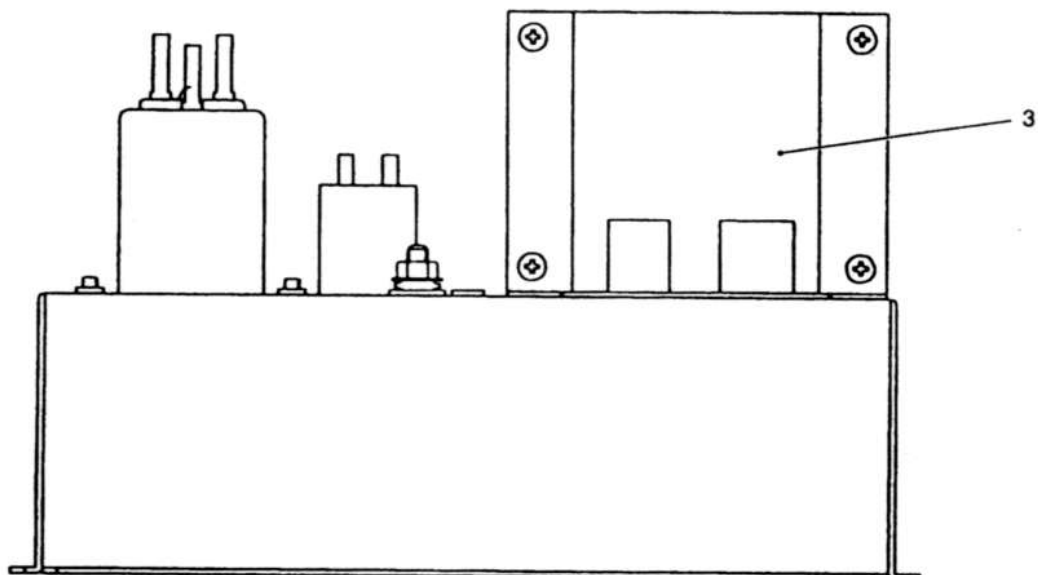
8-2 Coin Assy



No.	Part name	Quantity	Part number
1	Coin box	1	667-211
2	Service box	1	667-212
3	Back plate	1	667-213
4	Harness tunnel	1	667-214
5	Service sticker S	1	665-182
6	Service sticker B1	1	461-022
7	Coin case J (F2)	1	461-712
9	Cash box (B)	1	463-601
10	Service door [SD-204N-N-P]	1	100-122
11	Coin lock [C-88-1] (random number) See Note 1.	1	101-011
12	Clasp (C)	1	100-121
13	Electric lock [VM78Z]	1	101-034
14	Coin counter [NX-06FD]	1	003-023
15	Bush switch (red) [AP-1-1R]	1	000-097
16	Slide switch [SDS103A-3BA]	1	255-409
17	Bush switch (green) [AP-1-1G]	1	000-310
18	Toggle switch [MS-500E-BC-R]	1	000-313
19	Bush switch (green) [AP-1-1G]	1	000-321

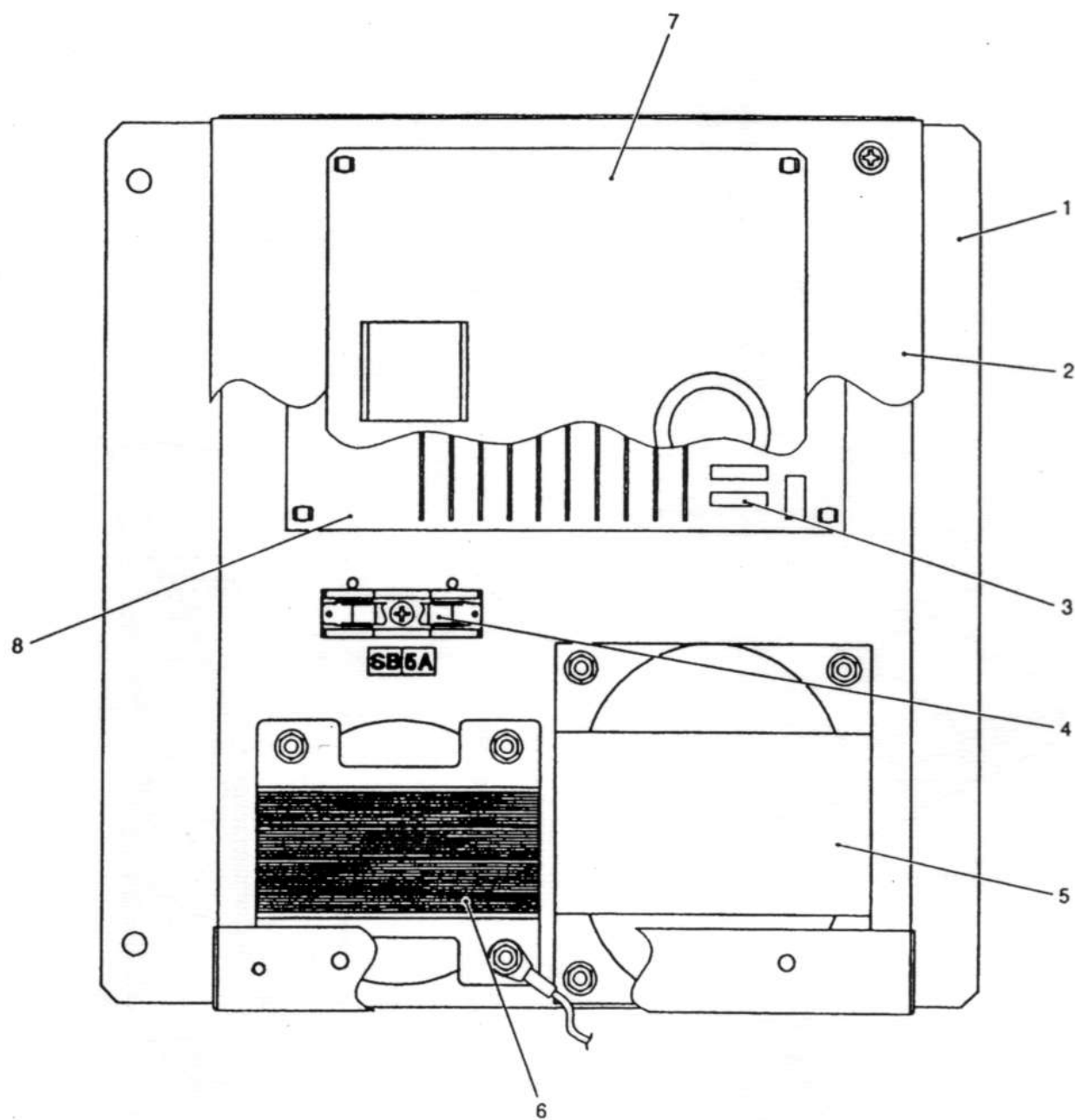
Note 1: If you specify the part number for the part No. 11, contact your distributor.

8-3 Cable box Assy



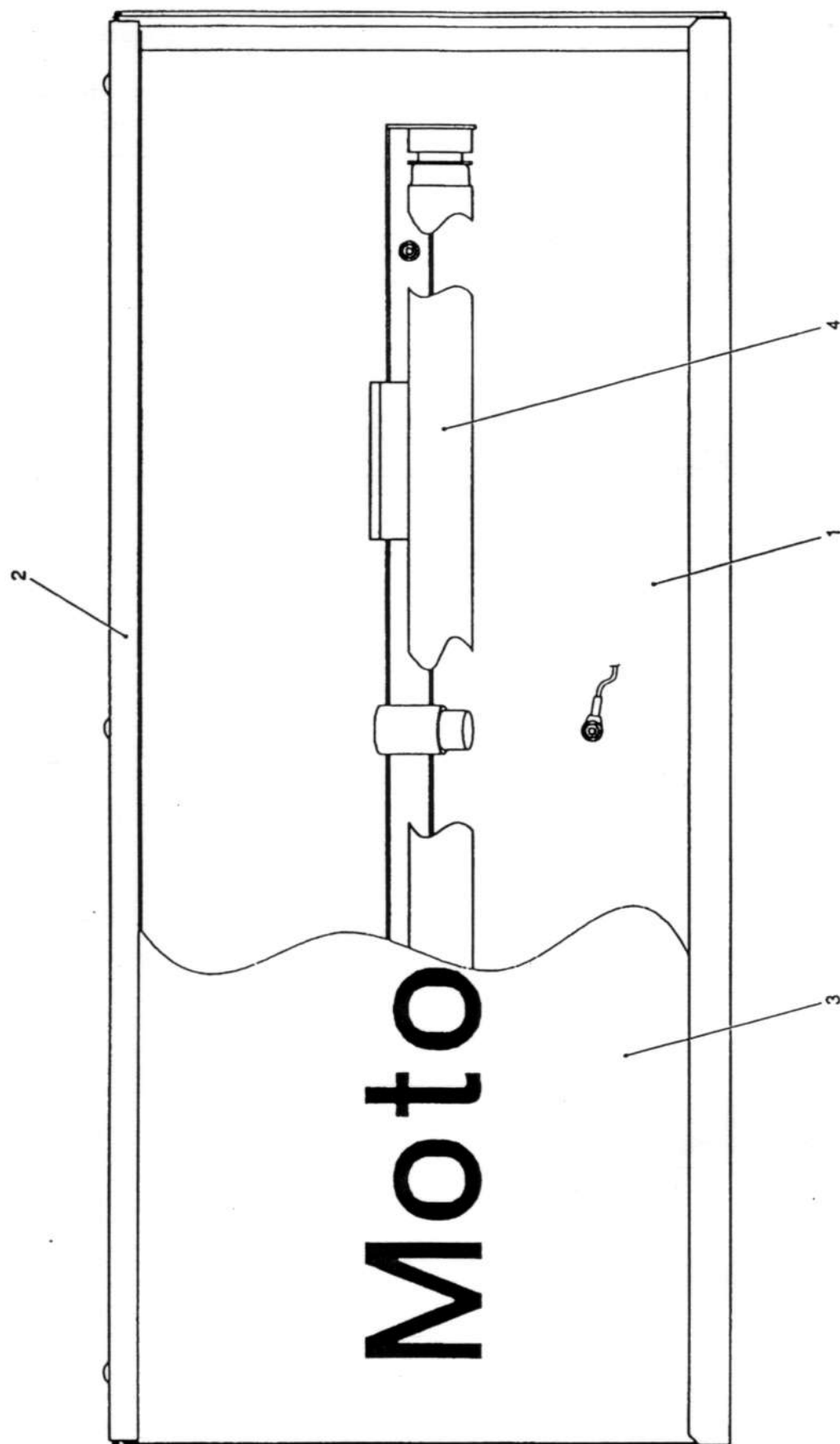
No.	Part name	Quantity	Part number
1	Cable box	1	667-311
2	Cable cover	1	667-312
3	TRANSIT PCB Assy	1	666-761
4	Toggle switch [ET-225K]	1	-
5	Fuse [250 V, 4A]	1	001-014

8-4 Control panel Assy



No.	Part name	Quantity	Part number
1	Control board	1	667-351
2	PCB plate	1	667-532
3	Fuse [250V 2A]	2	001-012
4	Fuse [250 V 4A]	1	001-035
5	Transformer [NC8659]	1	–
6	Transformer [NC8409]	1	–
7	AMC PCB	1	–
8	HP AMP PCB	1	–

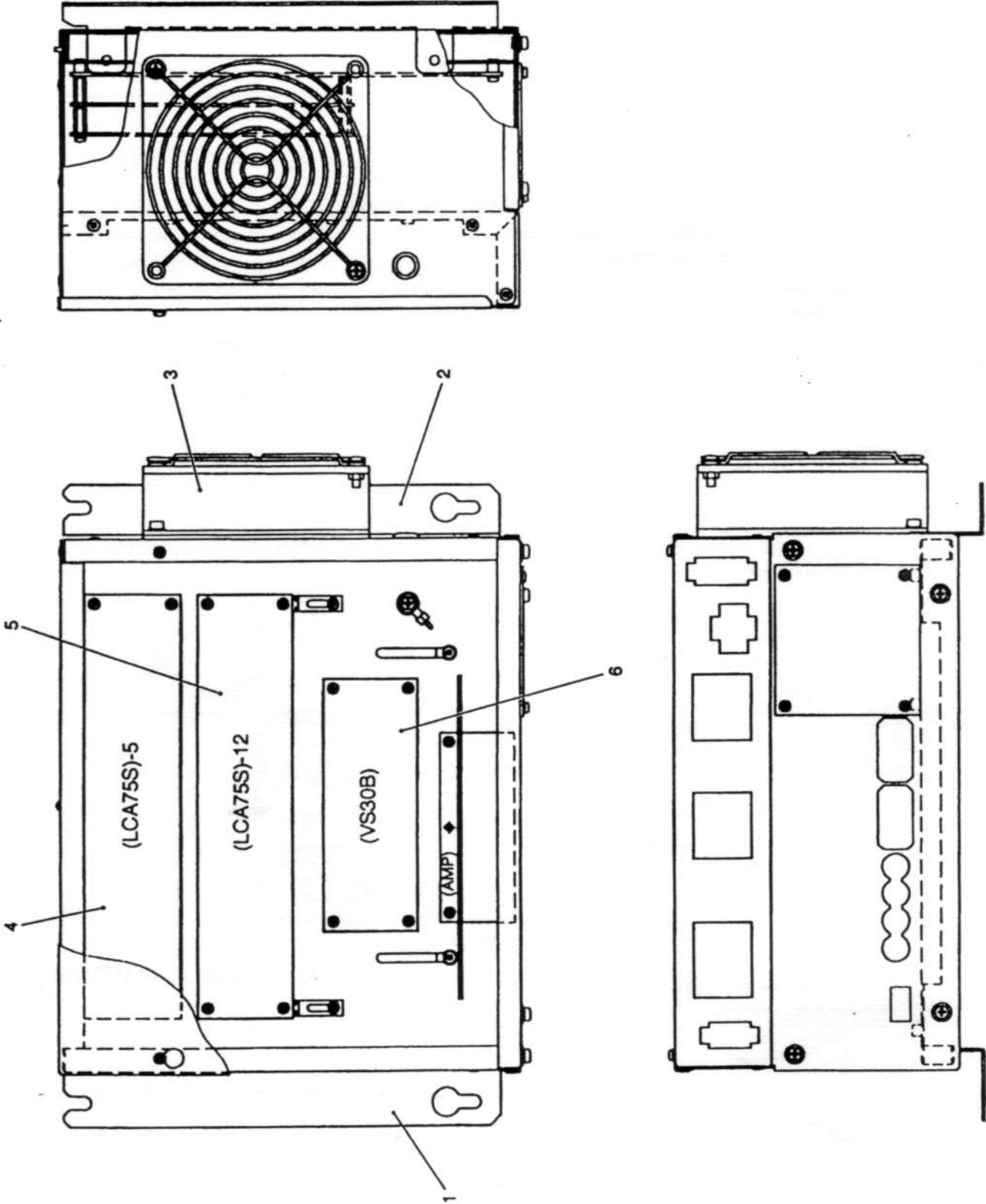
8-5 Signboard Assy



No.	Part name	Quantity	Part number
1	Signboard box	1	667-411
2	Acrylic bracket	1	667-412
3	Signboard acrylic plate	1	667-413
4	Fluorescent lamp [20 W]	1	_____

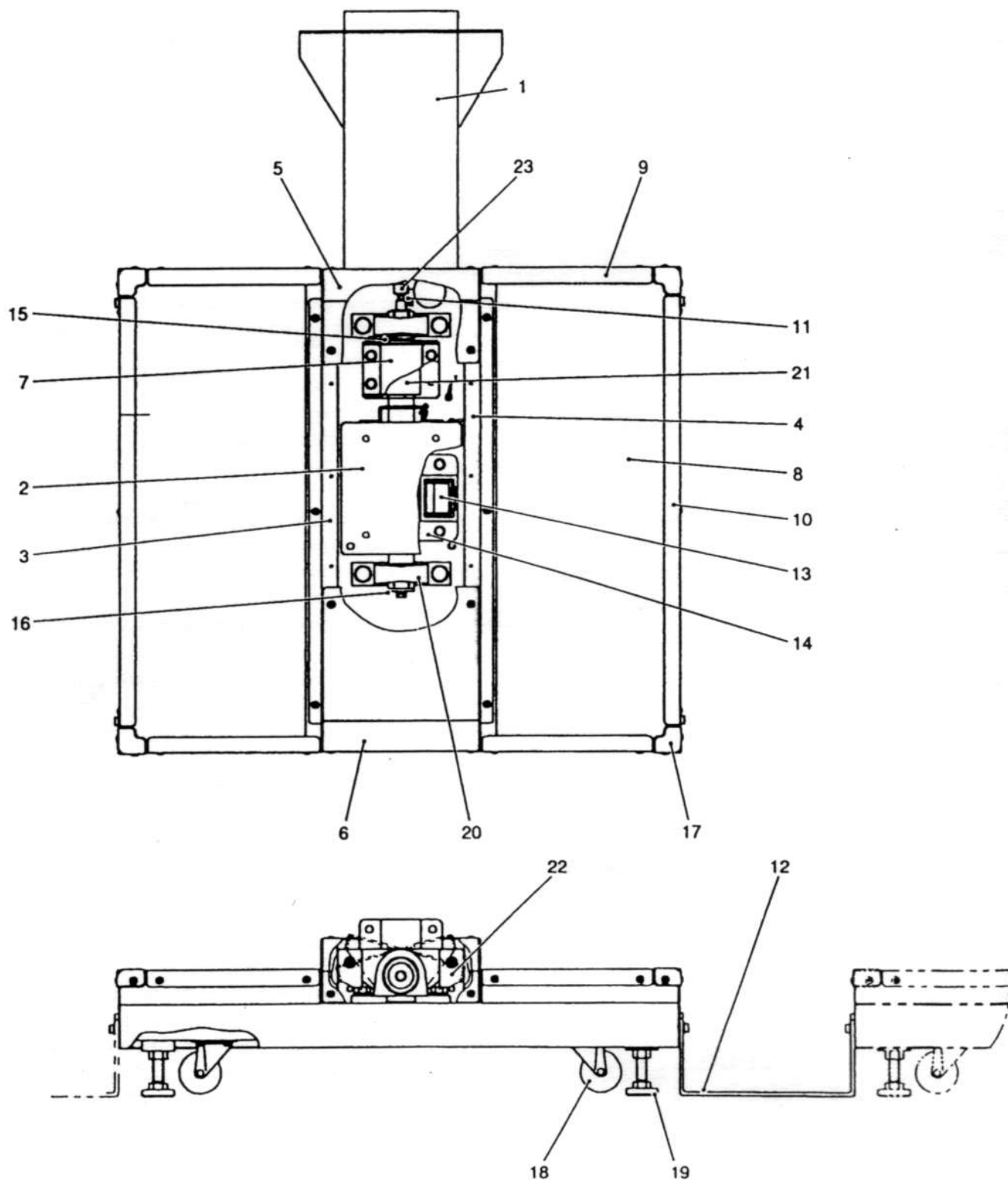


8-6 Rack S23 Assy



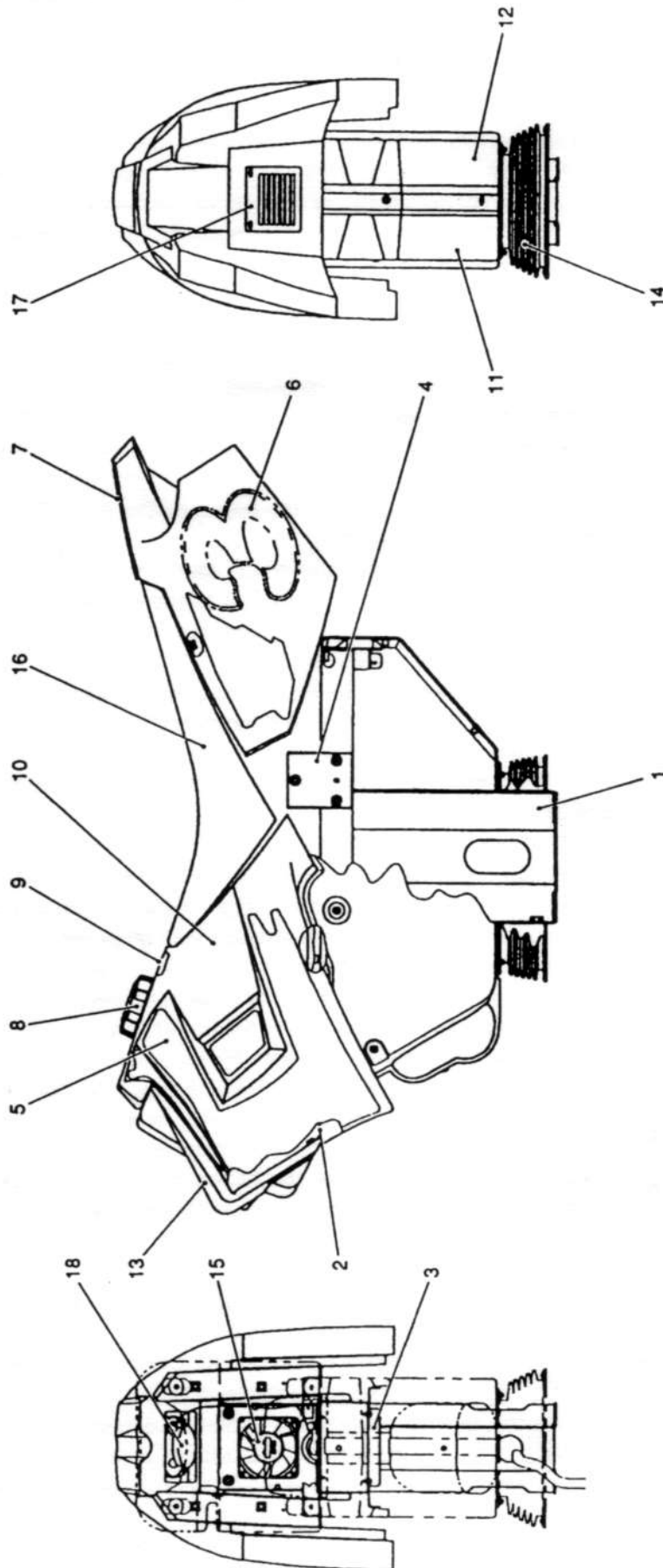
No.	Part name	Quantity	Part number
1	Metal fittings (L)	1	461-050
2	Metal fittings (R)	1	461-051
3	Fan motor [4715MS-10T-B50]	1	005-209
4	Switching regulator [LCA-75S-5] [for 5V]	1	009-059
5	Switching regulator [LCA-75S-12] [for 12V]	1	009-060
6	Switching regulator [VS30B-3] [for 3.3V]	1	009-100

8-7 Bike base Assy



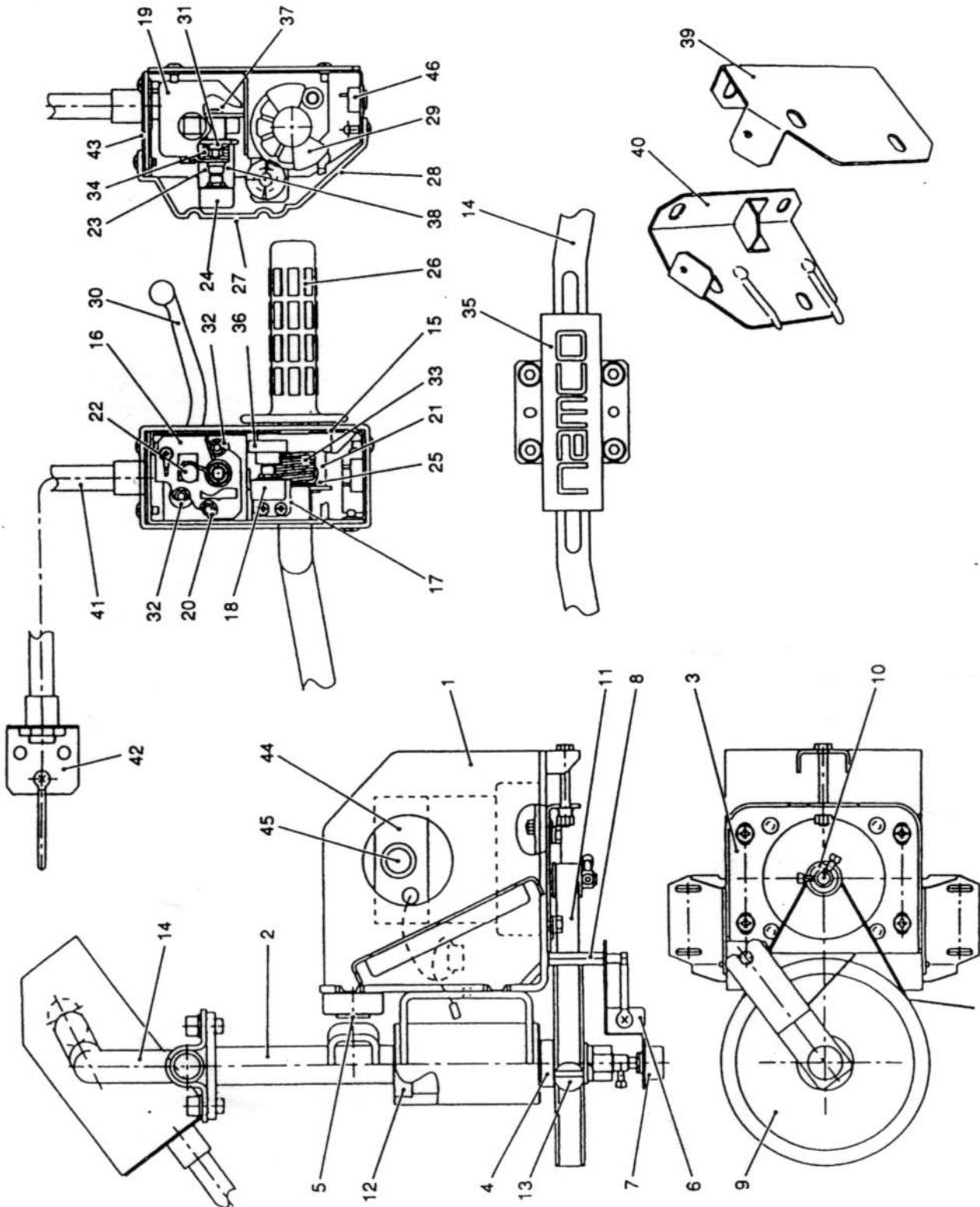
No.	Part name	Quantity	Part number
1	Ride base	1	667-511
2	Rolling shaft	1	667-513
3	Cover box L	1	667-514
4	Cover box R	1	667-564
5	Cover plate F	1	667-515
6	Cover plate B	1	667-516
7	Loster bracket	1	666-126
8	Step seat	2	667-518
9	Step mall F	4	667-520
10	Step mall S	2	667-521
11	Control bracket	1	667-523
12	Ride joint	2	—
13	Stopper rubber	2	666-134
14	Stopper base	1	666-132
15	Washer (A)	1	666-128
16	Washer (B)	1	666-129
17	Point cover	4	450-122
18	Caster [440G-N65]	5	102-028
19	Adjuster [MKRL-50-16-78B6]	4	102-039
20	Pillow type unit [UCPE206]	2	103-081
21	Loster [DR-S 38 x 80]	1	106-042
22	Locking plate [metal fittings]	2	666-133
23	Control 40 degrees [EWSV7BF20E13]	1	008-021

8-8 Bike Assy



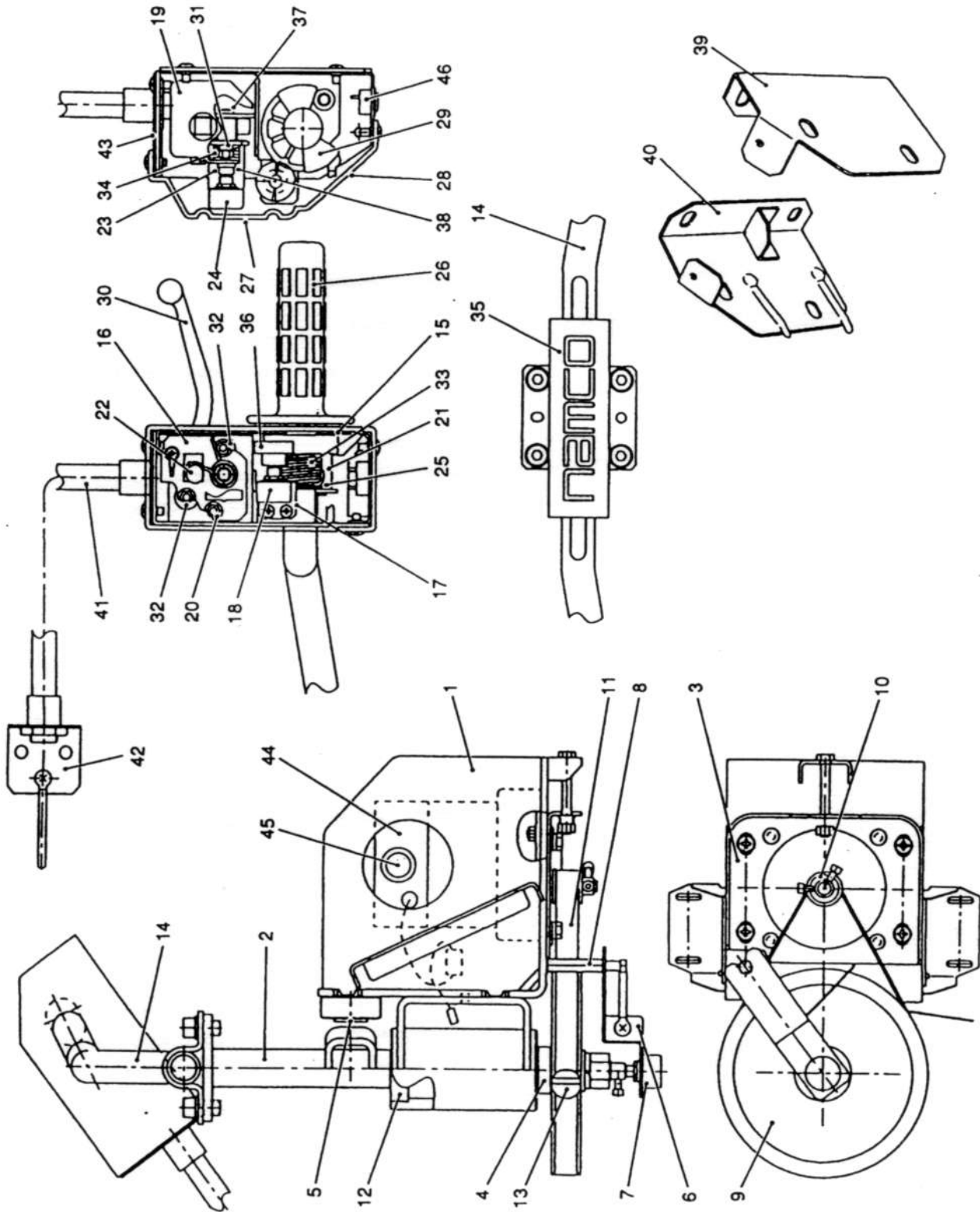
No.	Part name	Quantity	Part number
1	Bike frame	1	667-551
2	Pulley cover bracket	1	666-217
3	Engine bracket	2	666-219
4	Side bracket	2	666-220
5	Ride side sticker (L)	1 set	666-222
	Ride side sticker (R)		
6	Racing number sticker	2	666-223
7	Fender sticker	1	666-224
8	Speaker cover	1	666-225
9	Caution sticker (Only one person)	1	461-365
10	Bike body	1	666-243
11	Engine cover L	1	666-244
12	Engine cover R		
13	Pulley cover	1	666-246
14	MX bellows	1	666-247
15	Fan motor [TD92A4HRN]	1	005-213
16	Bike seat	1	666-250
17	Air cover	1	666-251
18	Speaker [F92A33-3]	1	006-079

8-9 Handle Assy



No.	Part name	Quantity	Part number
1	Steering base	1	666-326
2	Handle shaft	1	666-317
3	Motor plate	1	666-315
4	Pulley collar	1	666-314
5	Stopper rubber	2	666-313
6	Steering control bracket	1	666-310
7	Steering control 60 degrees [EWS-V7CF20E13]	1	008-023
8	Bracket rod	1	666-309
9	Pulley (A)	1	666-301
10	Pulley (B)	1	666-300
11	Belt [150S3M522]	1	108-022
12	Bearing [60/22-ZZ]	2	103-083
13	Parallel key [6 x 6 x 20]	1	107-055
14	Handle	1	666-324
15	Box cover	1	666-323
16	Brake upper plate	1	666-322
17	Accelerator control bracket	1	666-321
18	Accelerator control 280 degrees [EWS-UGBF20E13]	1	008-022
19	Slide plate	1	666-320
20	Stopper spacer	3	666-319
21	Accelerator stopper	1	666-318
22	Stopper rod	1	666-316
23	Brake control bracket	1	666-312
24	Brake control 40 degrees [EWS-V7BF20E13]	1	008-021
25	Accelerator washer	1	666-311
26	Grip	2	666-331
27	Accelerator cover	1	666-332
28	Switching sticker	1	666-337
29	Grip base	1	240-102
30	Brake lever S/A	1	666-329
31	Spring stopper spacer	1	666-306
32	Brake stopper	2	666-305

8-9 Handle Assy



No.	Part name	Quantity	Part number
33	Throttle spring	1	666-304
34	Brake spring	1	666-302
35	Bar pad	1	666-327
36	Spur gear [S1S24B+0806]	1	240-126
37	Flange bush [BM0705FB]	1	104-061
38	Flange bush [BM1012FB]	1	104-060
39	Hold plate (L)	1	666-340
40	Hold plate (R)	1	666-341
41	Harness tube	1	666-342
42	Connector holder	1	666-343
43	Connector plate	1	666-344
44	Handle motor	1	005-143
45	Motor brush (for the handle motor)	1	005-147
46	View point switch [VHM-1-G-XGZX0077]	1	000-318

7-3-6 Bike base Assy

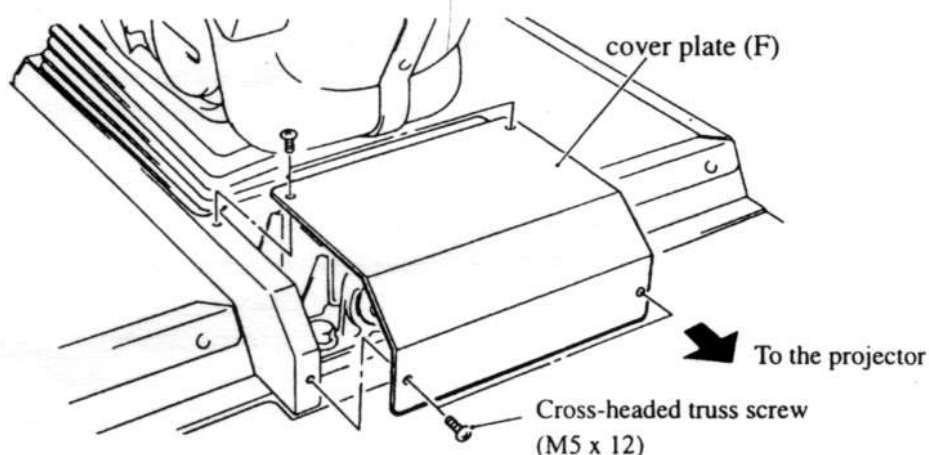
(1) Replacing the bank control with a new one



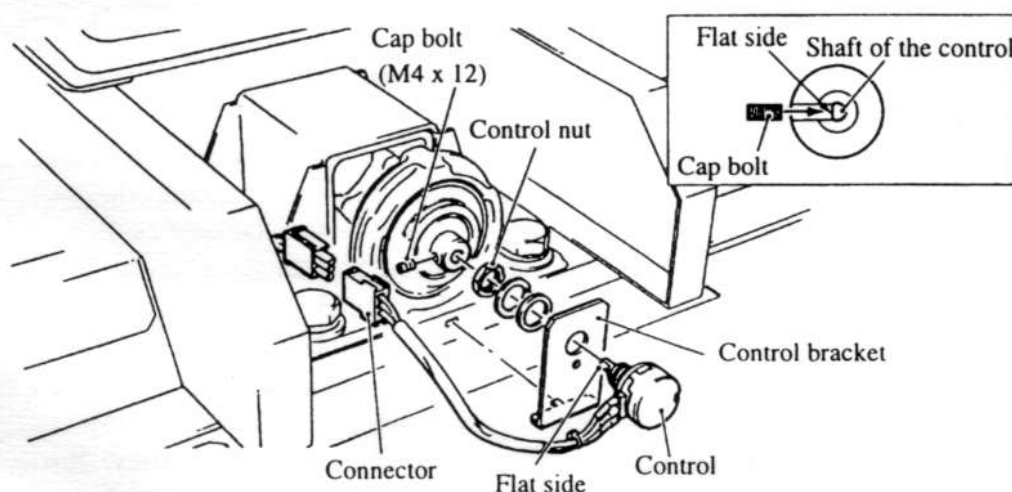
CAUTION

- Be sure to turn off the power switch before following the instructions below.

- 1 Remove four cross-headed truss screws (M5 x 12) to remove the cover plate (F).



- 2 Disconnect one connector, then loosen the Cap bolt (M4 x 12) to remove the control bracket.
- 3 Remove the nut of the control, then remove the control from the control bracket.



- 4 Assemble the bank control following the procedure above in reverse order.

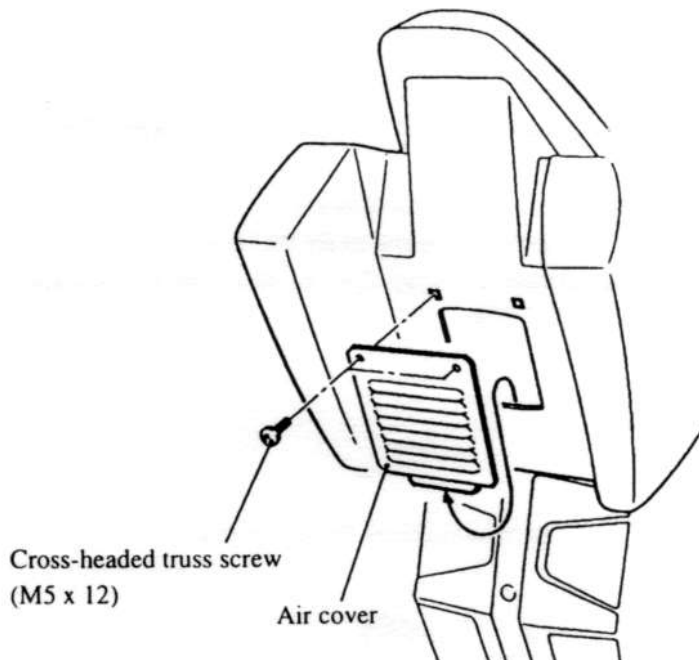
NOTE

- Direct the flat side of the control shaft toward the double point (see the figure above).
- 5 After replacing the bank control with a new one, be sure to initialize this unit (see "6-4 Adjustment when a part is replaced with a new one (Initializing this unit)" on page 43).

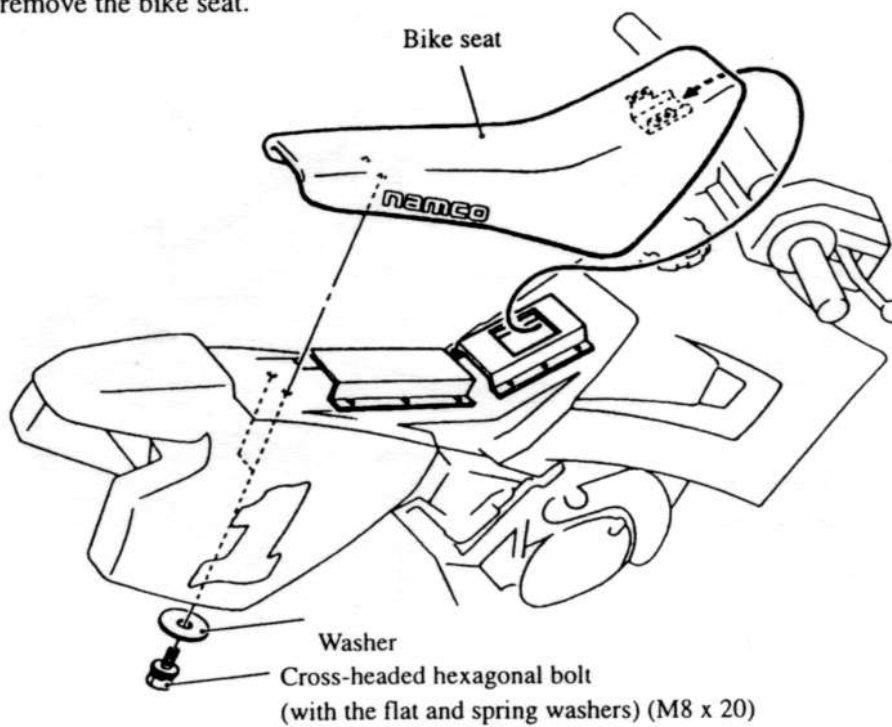
7-3-7 Bike Assy

(1) Replacing the bike seat with a new one

- 1** Remove two cross-headed truss screws (M5 x 12) to remove the air cover.



- 2** Remove two cross-headed hexagonal bolts (equipped with the flat and spring washers) and washers to remove the bike seat.



- 3** Assemble the bike seat following the instructions above in reverse order.

7-3-8 Handle Assy

(1) Removing the accelerator cover and the connector plate

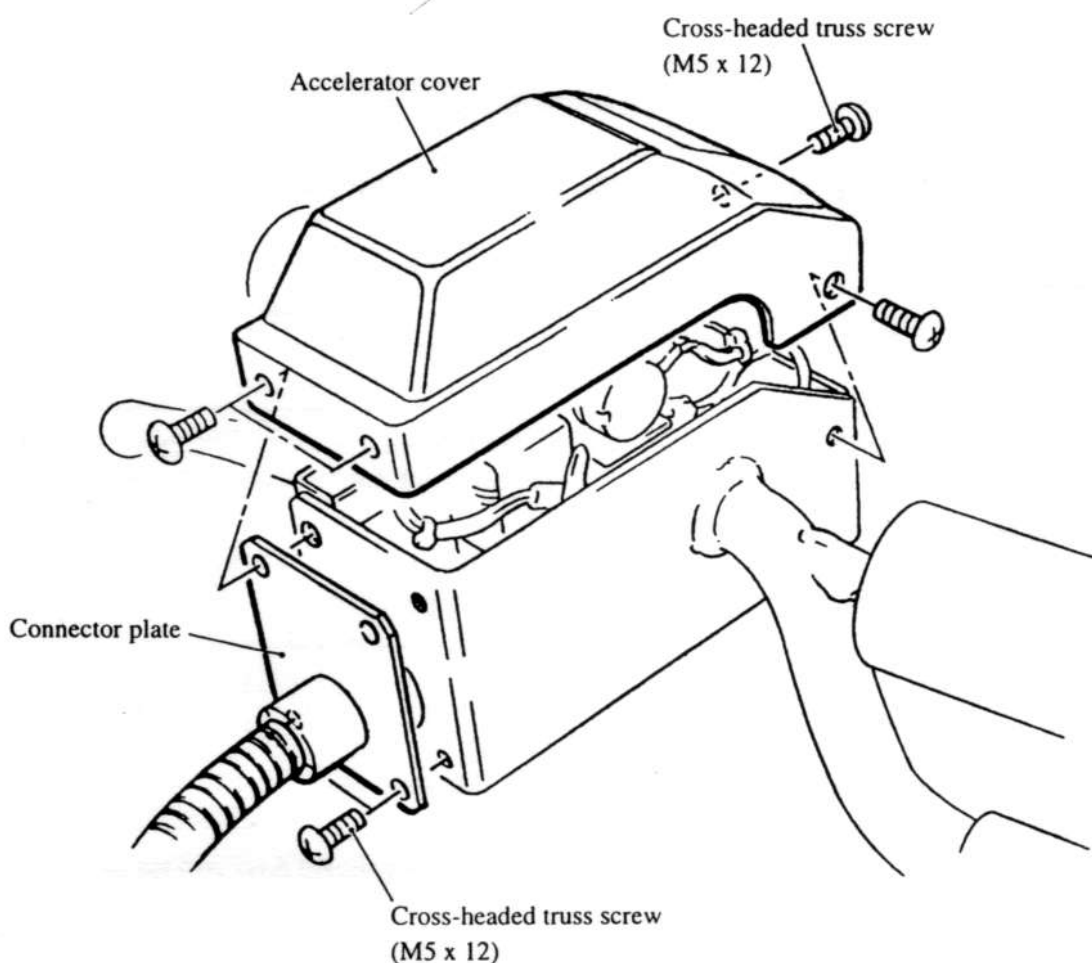


CAUTION

- Be sure to turn off the power switch before following the instructions below.

1 Remove four cross-headed truss screws (M5 x 12) to remove the accelerator cover.

2 Remove two cross-headed truss screws (M5 x 12) to remove the connector plate.



3 Assemble the accelerator cover and the connector plate following the procedure above in reverse order.

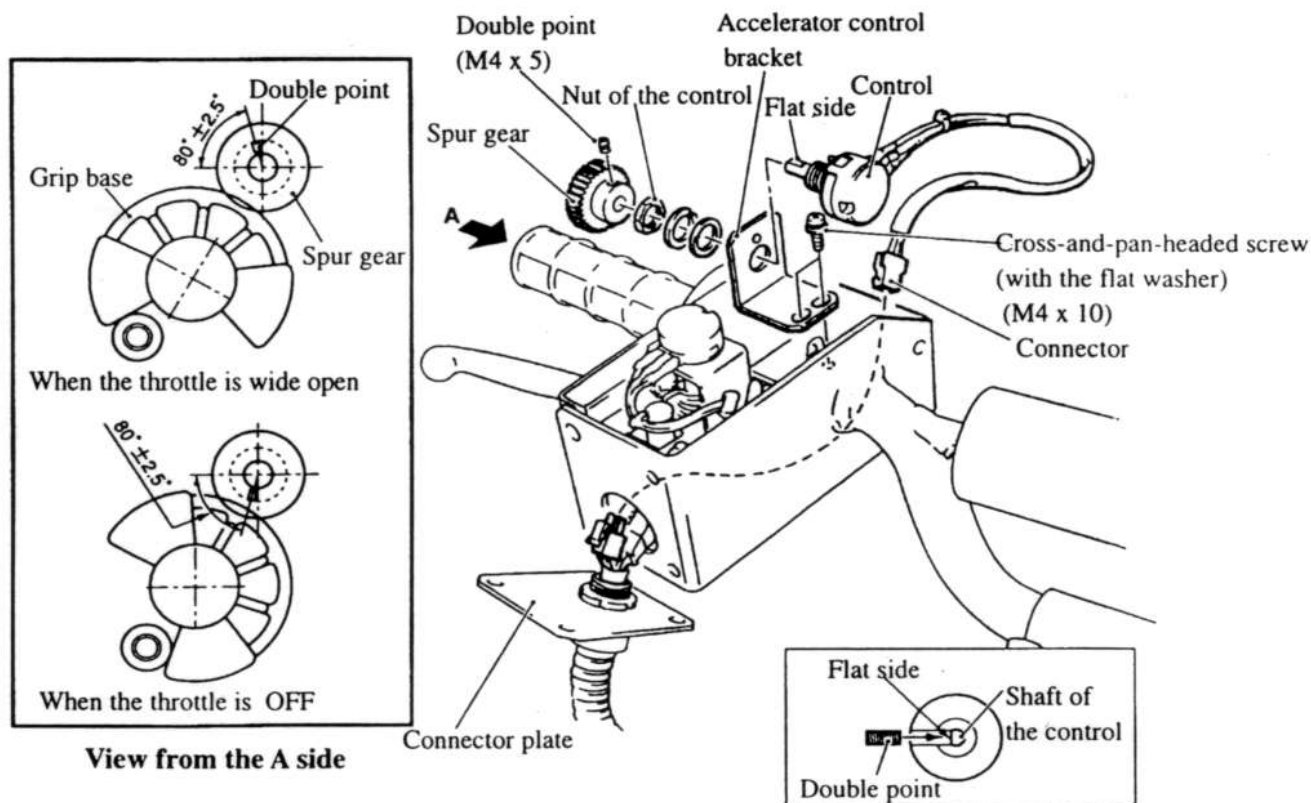
2) Replacing the accelerator control with a new one



CAUTION

- Be sure to turn off the power switch before following the instructions below.

- 1 Remove the accelerator cover and the connector plate (see “7-3-8 (1) Removing the accelerator cover and the connector plate” on page 67).
- 2 Remove one connector from the accelerator control.
- 3 Remove two cross-and-pan-headed screws (equipped with the flat washer) to remove the accelerator control bracket.
- 4 Loosen one double point (M4 x 5), then remove the spur gear.
- 5 Remove the nut from the control, then remove the control from the accelerator control bracket.



- 6 Assemble the accelerator control following the instructions above in reverse order.

NOTE

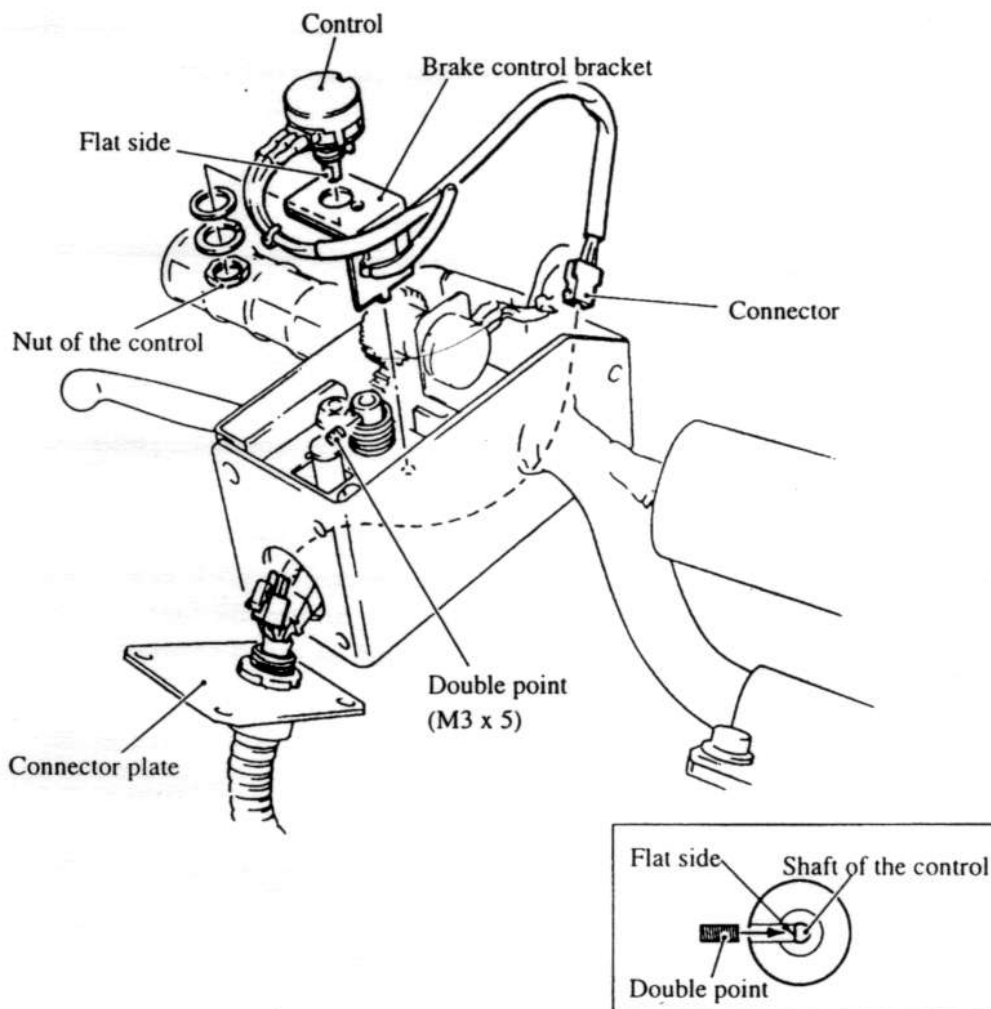
- To fix the accelerator control bracket, tighten the screw after checking to see if the gear engages smoothly.
 - Direct the flat side of the control shaft toward the double point of the spur gear (see the figure above).
 - To engage the grip base and the spur gear, the double point of the spur gear should be positioned at the upper side (vertical) when the throttle is wide open.
- 7 After replacing the accelerator control with a new one, be sure to initialize this unit (see “6-4 Adjustment when a part is replaced with a new one (Initializing this unit)” on page 43).

(3) Replacing the brake control with a new one

**CAUTION**

- Be sure to turn off the power switch before following the instructions below.

- 1 Remove the accelerator cover and the connector plate (see "7-3-8 (1) Removing the accelerator cover and the connector plate" on page 67).
- 2 Disconnect one connector from the brake control.
- 3 Loosen one double point (M3 x 5), then remove the brake control bracket.
- 4 Remove the nut from the control to remove the control from the brake control bracket.



- 5 Install the brake control following the instructions above in reverse order.

NOTE

- Direct the flat side of the control shaft toward the double point (see the figure above).
- 6 After replacing the brake control with a new one, be sure to initialize this unit (see "6-4 Adjustment when replacing a part with a new one (Initializing this unit)" on page 43).

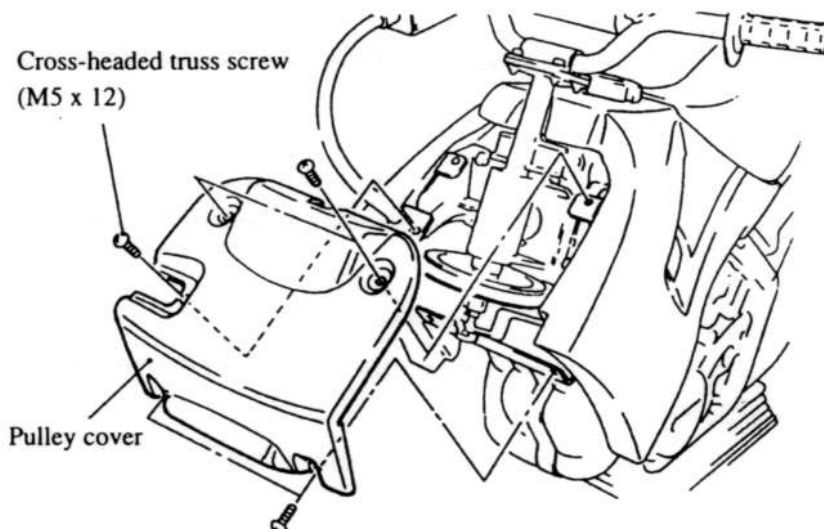
(5) Replacing the handle control with a new one



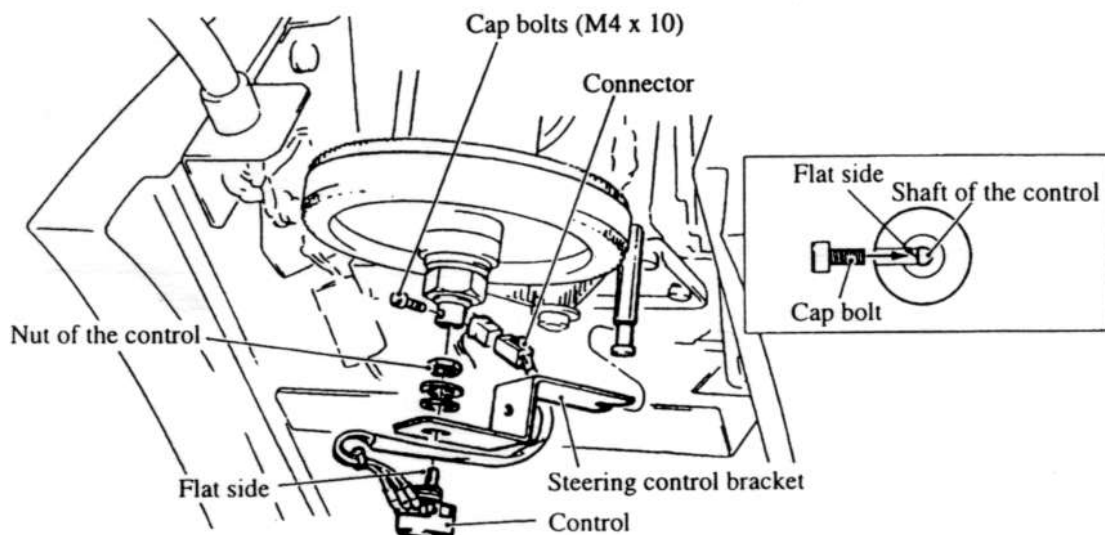
CAUTION

- Be sure to turn off the power switch before following the instructions below.

- 1 Remove five cross-headed truss screws (M5 x 12) to remove+ the pulley cover.



- 2 Disconnect one connector from the control.
- 3 Loosen one cap bolt (M4 x 10), then remove the steering control bracket.
- 4 Remove the nut from the control to remove the control from the steering control bracket.



- 5 Assemble the handle control following the instructions above in reverse order.

NOTE

- Direct the flat side of the control shaft toward the cap bolt (see the figure above).
- 6 After replacing the handle control with a new one, be sure to initialize this unit (see "6-4 Adjustment when a part is replaced with a new one (Initializing this unit)" on page 43).

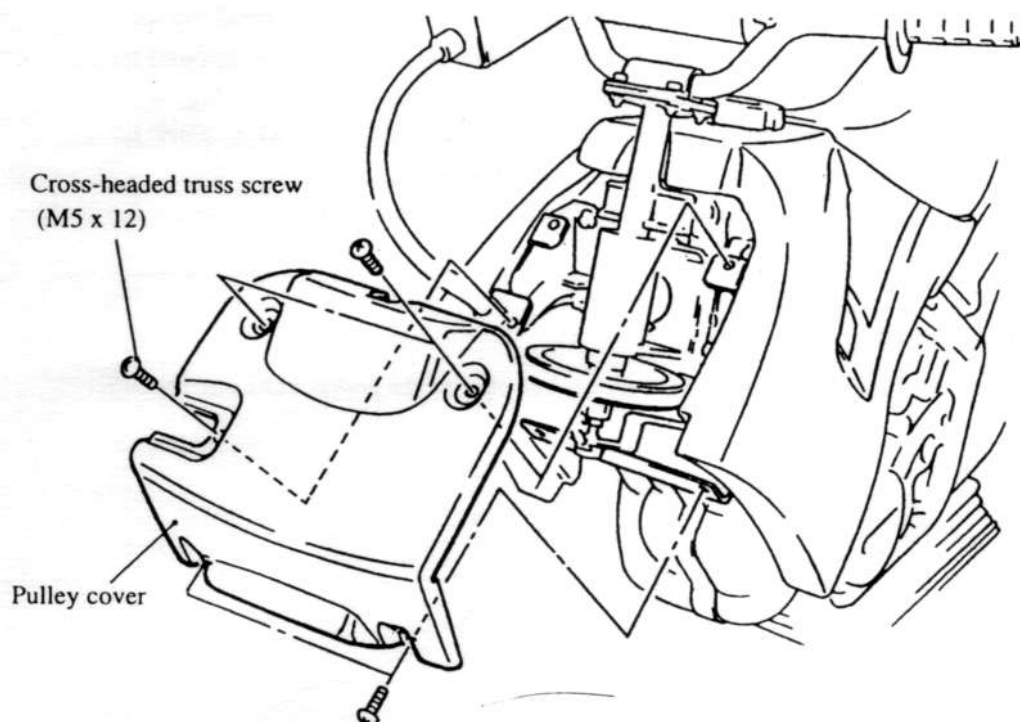
(6) Removing the handle Assy



CAUTION

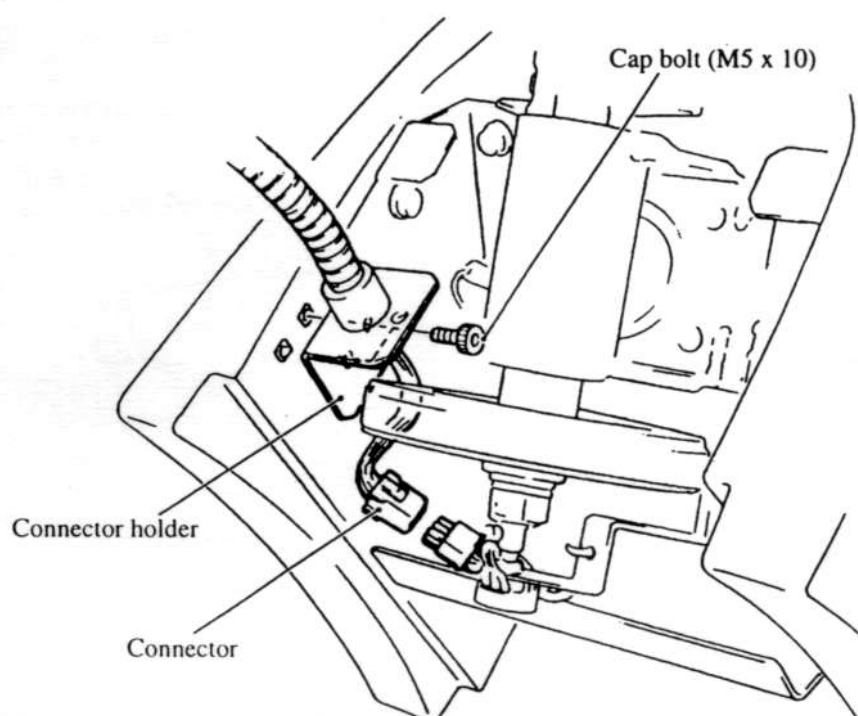
- Be sure to turn off the power switch before following the instructions below.

1 Remove five cross-headed truss screws (M5 x 12) to remove the pulley cover.



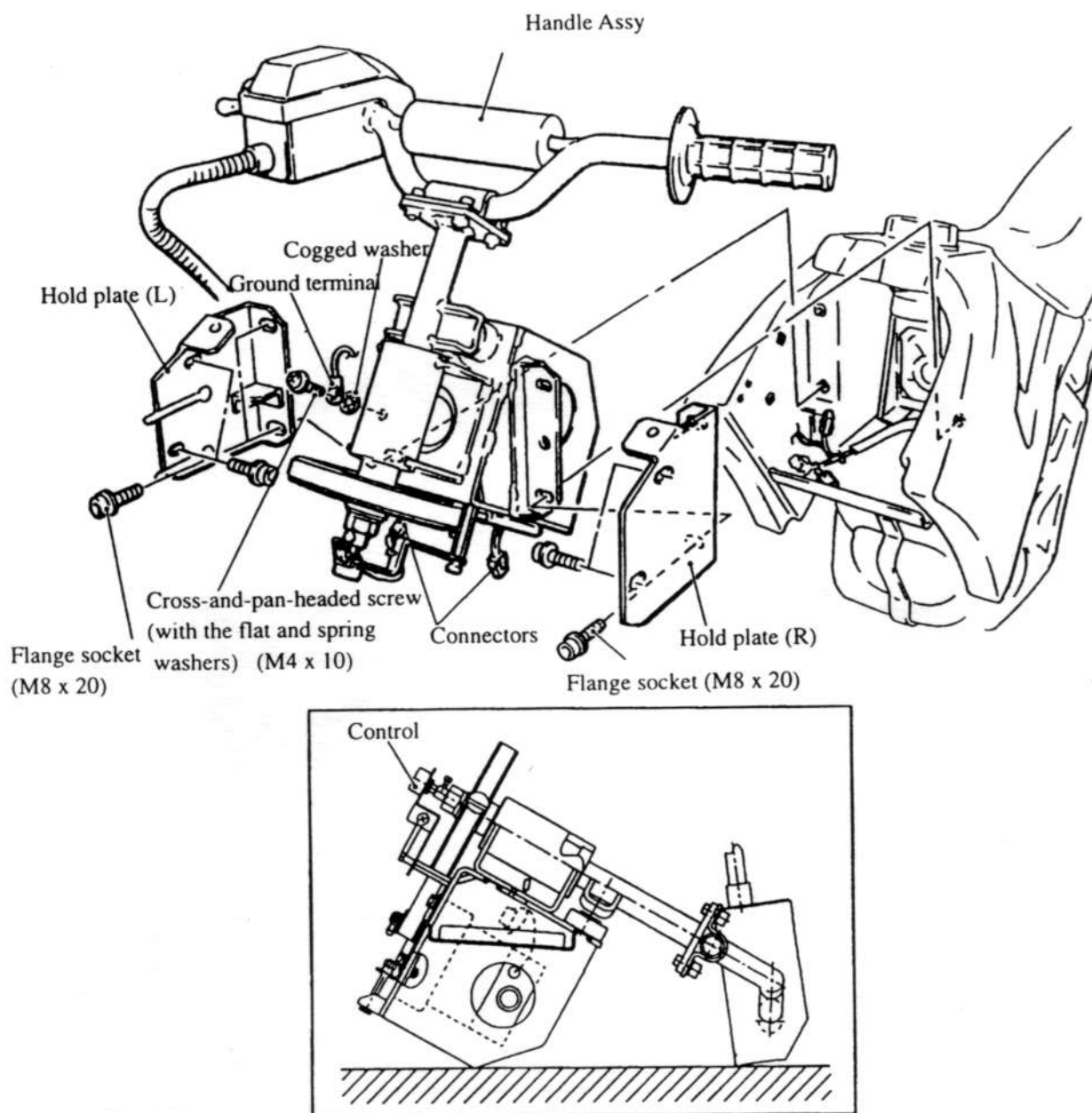
2 Disconnect one connector from the connector holder.

3 Remove two cap bolts (M5 x 10) to remove the connector holder.



7. Maintenance

- 4 Disconnect the ground terminal and two connectors.
- 5 Remove two sets of four flange sockets (M8 x 20) to remove the hold plates (L) and (R), and the handle Assy.



NOTE

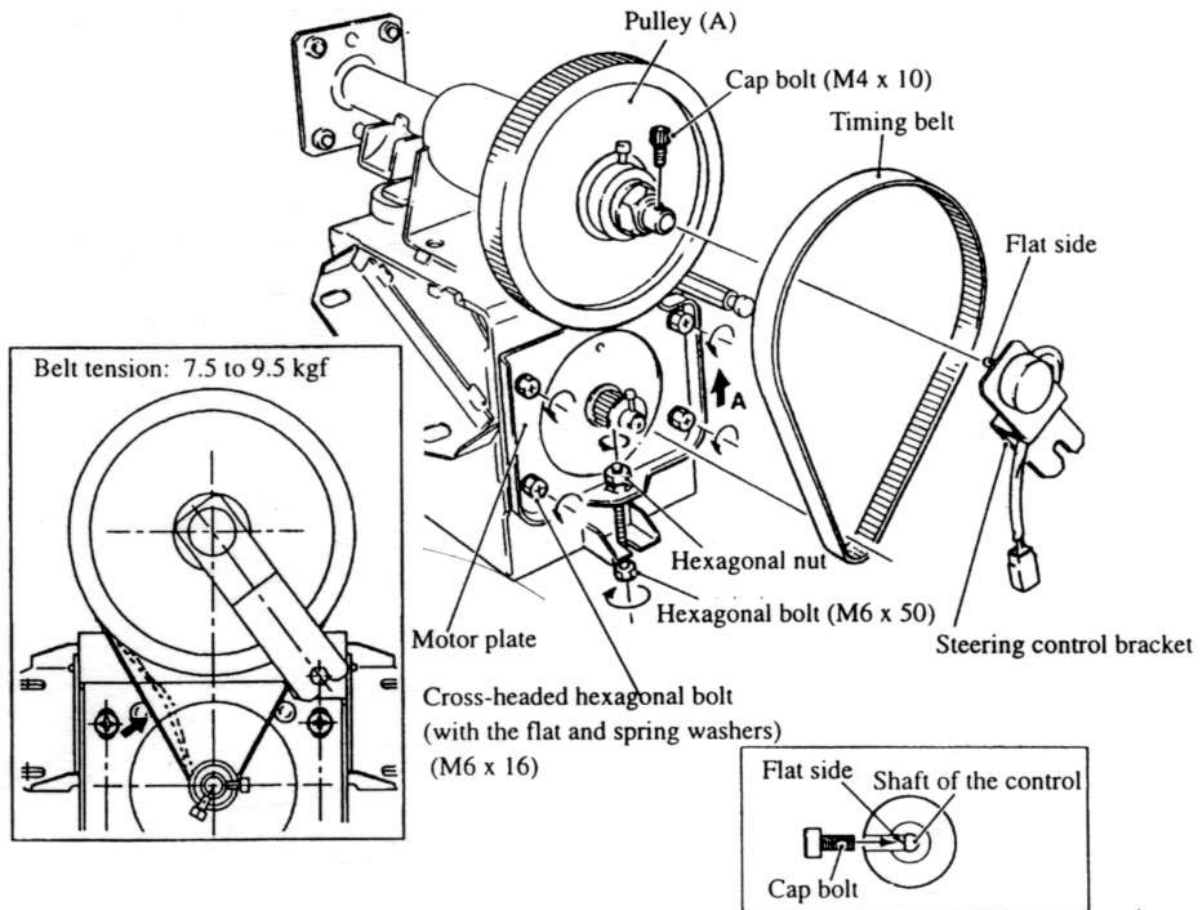
- When you place the removed handle Assy on the floor or like, be sure to place it with the control side up (see the figure above).
- 6 Assemble the handle Assy following the instructions above in reverse order.
 - 7 After assembling the handle Assy, be sure to initialize this unit (see "6-4 Adjustment when a part is replaced with a new one (Initializing this unit)" on page 43).

7) Replacing the timing belt with a new one

**CAUTION**

- Be sure to turn off the power switch before following the instructions below.

- 1 Remove the handle Assy (see "7-3-8 (6) Removing the handle Assy" on page 73).
- 2 Loosen one cap bolt (M4 x 10) to remove the steering control bracket.
- 3 Loosen four cross-headed hexagonal bolts (equipped with the flat and spring washers) (M6 x 16).
- 4 Loosen one hexagonal nut and one hexagonal bolt (M6 x 50) which fix the motor plate. Slide the motor plate toward the pulley (A) side, then remove the timing belt.



- 5 Install the timing belt following the instructions above in reverse order.

NOTE

- Direct the flat side of the control shaft toward the cap bolt (see the figure above).
 - The belt tension should be from 7.5 to 9.5 kgf. (Adjust the timing belt so that the flexure is 1.0 to 1.5 mm when you push its center with 0.5 kgf, and 2.0 to 2.5 mm when under the weight of 1.0 kgf.)
- 6 After replacing the timing belt with a new one, be sure to initialize this unit (see "6-4 Adjustment when a part is replaced with a new one (Initializing this unit)" on page 43.)

(8) Replacing the motor



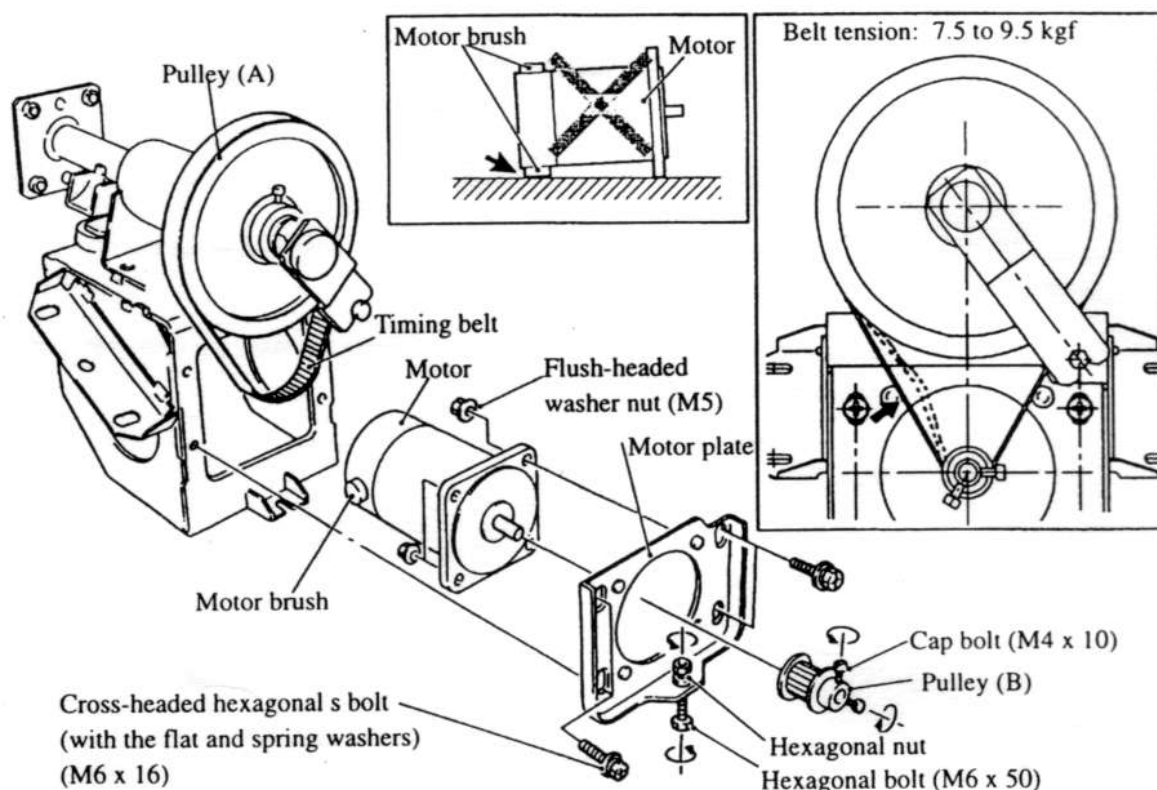
CAUTION

- Be sure to turn off the power switch before following the instructions below.

- 1 Remove the handle Assy (see "7-3-8 (6) Removing the handle Assy" on page 73).
- 2 Loosen four cross-headed hexagonal bolts (equipped with the flat and spring washers) (M6 x 16).
- 3 Loosen one hexagonal nut and one hexagonal bolt (M6 x 50) which fix the motor plate, then slide the motor plate to the pulley (A) side to remove the timing belt from the pulley (B).
- 4 Remove four cross-headed hexagonal bolts (equipped with the flat and spring washers) (M6 x 16) to remove the motor together with the motor plate.
- 5 Remove four flush-headed washer nuts (M5) to remove the motor from the motor plate.

NOTE

- When you place the removed motor on the floor or like, do not face the motor brushes (two) down.
- 6 Loosen two cap bolts (M4 x 10), then remove the pulley (B).



- 7 Install the motor following the instructions above in reverse order.

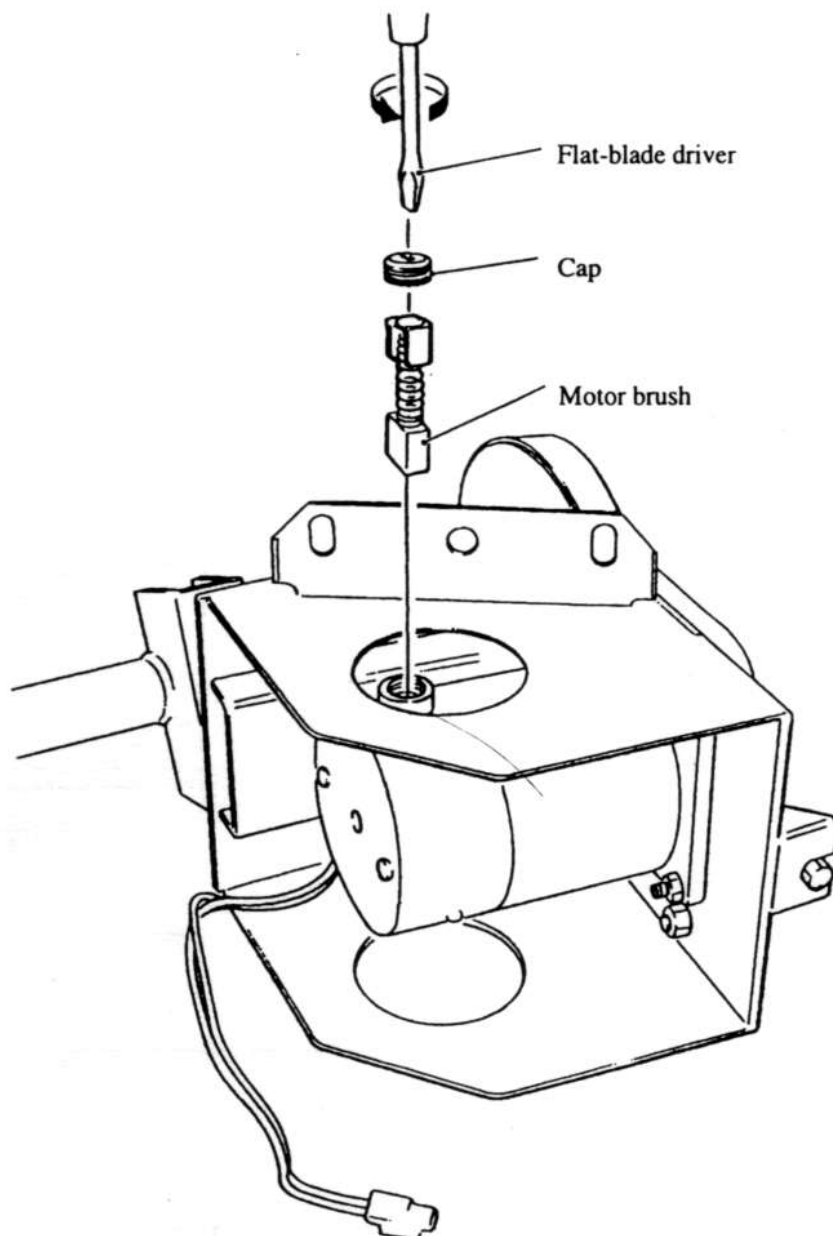
NOTE

- The belt tension is 7.5 to 9.5 kgf. (Adjust the timing belt so that it is bent 1.0 to 1.5 mm when you push its center with 0.5 kgf, and that it is bent 2.0 to 2.5 mm under the pressure of 1.0 kgf.)
- 8 After replacing the motor with a new one, be sure to initialize this unit (see "6-4 Adjustment when a part is replaced with a new one (Initializing this unit)" on page 43.)

(9) Replacing the motor brush with a new one**CAUTION**

- Be sure to turn off the power switch before following the instructions below.

- 1 Remove the handle Assy (see "7-3-8 (6) Removing the handle Assy" on page 73).
- 2 Using the flat-blade driver or equivalents, remove the cap to pull out the motor brushes (two).



- 3 Install the motor brush following the instructions above in reverse order.
- 4 After replacing the motor brushes with new ones, be sure to initialize this unit (see "6-4 Adjustment when a part is replaced with a new one (Initializing this unit)" on page 43.)